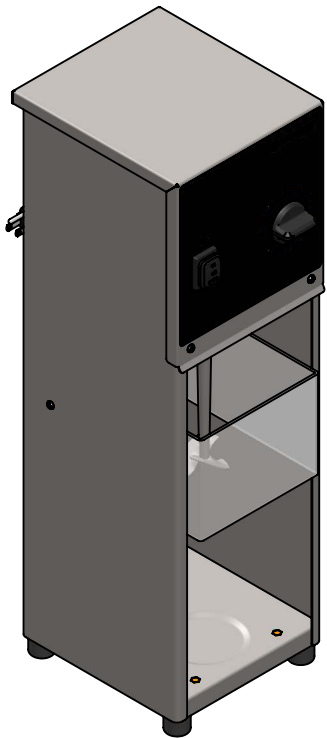
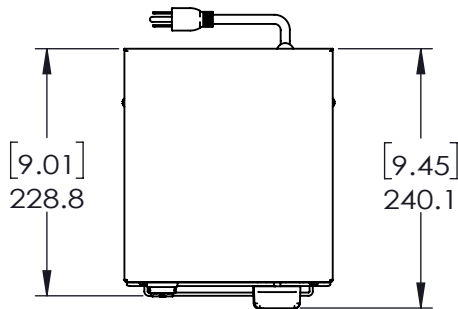
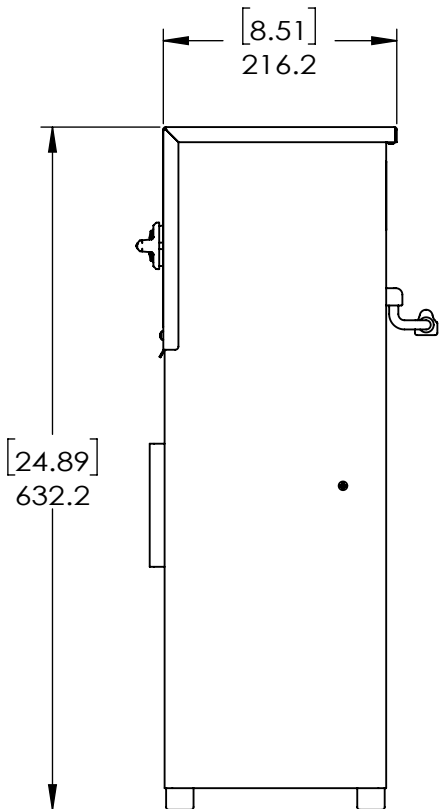
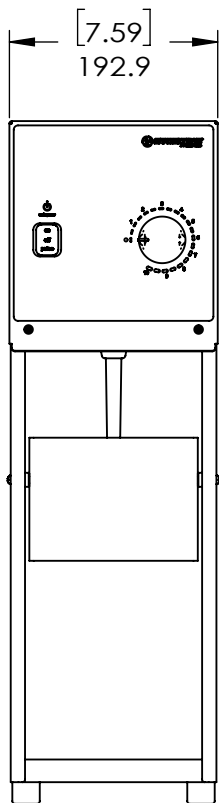


ITEM NO.	MODEL NO.	DESCRIPTION	VOLTAGE	CURRENT	POWER	CORD PLUG
BLNDR-120	MIB-S	120V MIX IN BLENDER, SPEED CONTROL	120V	1.4A	168W	5-15P



NOTES

1. SPEED CONTROL 0-10 WITH CONTROL KNOB
2. UNIT WEIGHT IS: 33.0 LBS
3. MATERIALS: STAINLESS STEEL ENCLOSURE, MIXER, AND MIXER SHAFT.
POLYCARBONATE SPLASH GUARD.
4. CERTIFICATIONS:
 - (1) UL 763 5TH EDITION
 - (2) CSA C22.2 NO. 195
 - (3) NSF 8



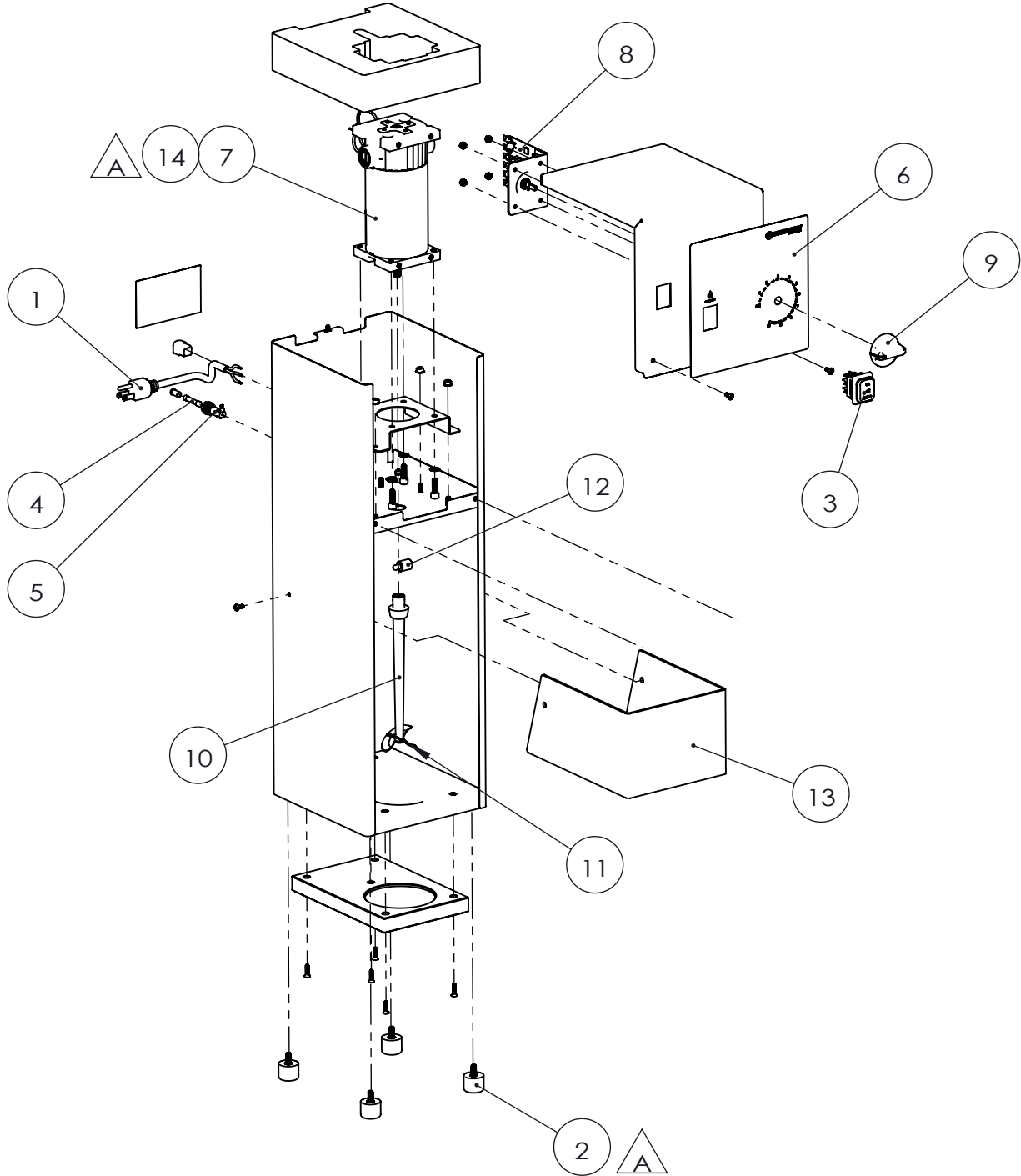
COMMERCIAL FOOD-
PREPARING MACHINE
E477674



COMMERCIAL POWERED FOOD
PREPARATION EQUIPMENT
NSF/ANSI 8
E480414

DIMENSIONS ARE IN MILLIMETERS (MM) UNLESS OTHERWISE NOTED.
DIMENSIONS IN BRACKETS ARE IN INCHES (IN) AND ARE FOR REFERENCE ONLY.

ITEM NO.	MODEL NO.	DESCRIPTION	VOLTAGE	CURRENT	POWER	CORD PLUG
BLNDR-120	MIB-S	120V MIX IN BLENDER, SPEED CONTROL	120V	1.4A	168W	5-15P



SN	PART NO.	DESCRIPTION	QTY.
1	354644-1	POWER CORD & STRAIN RELIEF KIT	1
2	354656-1	M6X14 FOOT KIT	1
3	354613-1	POWER SWITCH, DPDT, ON-OFF-PLS	1
4	354610-1	FUSE, 6.3X32MM, 5A, FAST	1
5	351769-1	FUSE HOLDER, HIGH PROFILE, 6.3X32MM FUSE	1
6	354611-1	OVERLAY, BLENDER, SPEED CONTRL	1
7	354641-1	MOTOR, BLENDER, BS, 90V	1
8	354586-1	120V SPEED CONTROL, BLENDER	1
9	351788-06-1	CONTROL KNOB	1
10	354645-1	BLENDER SHAFT AND COLLAR KIT	1
11	354579-1	MIXING HEAD STAINLESS ASM	1
12	354646-1	HINGE PINS KIT	1
13	354599-1	SPLASH GUARD	1
14	354648-1	MOTOR BRUSHES, BS, 90V & 180V	1